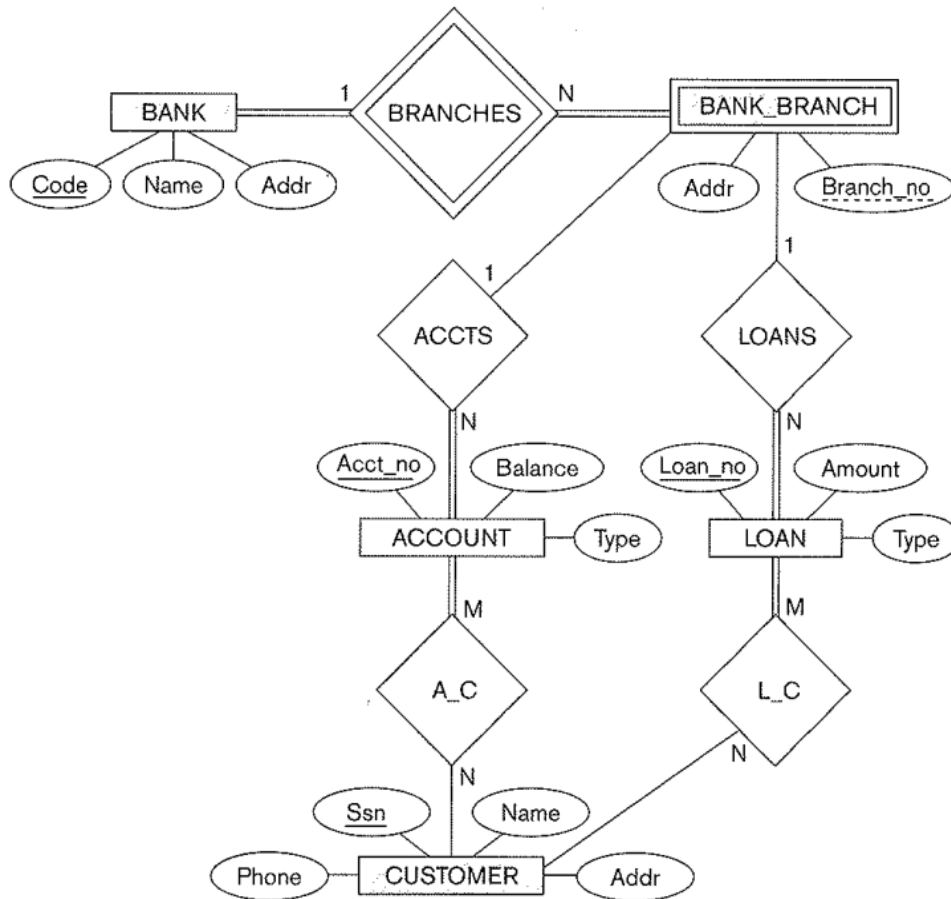


Exercise 2: Schema Diagram

Use the ER-to-Relational mapping algorithm to map the following ER-diagram into a relational database design (**Schema Diagram**).



The main steps are:

- Step 1: Mapping of Regular Entity Types

- Step 2: Mapping of Weak Entity Types

- Step 3: Mapping of Binary 1:1 Relation Types

- Step 4: Mapping of Binary 1:N Relationship Types.

- Step 5: Mapping of Binary M:N Relationship Types.

- Step 6: Mapping of Multivalued attributes.

- Step 7: Mapping of N-ary Relationship Types.